



Control panel for the Capstone MicroTurbine System. It features a numeric keypad on the left, a small LCD display in the center, and several function buttons on the right. The display shows the following data:

System	Data
1	18.6 MW

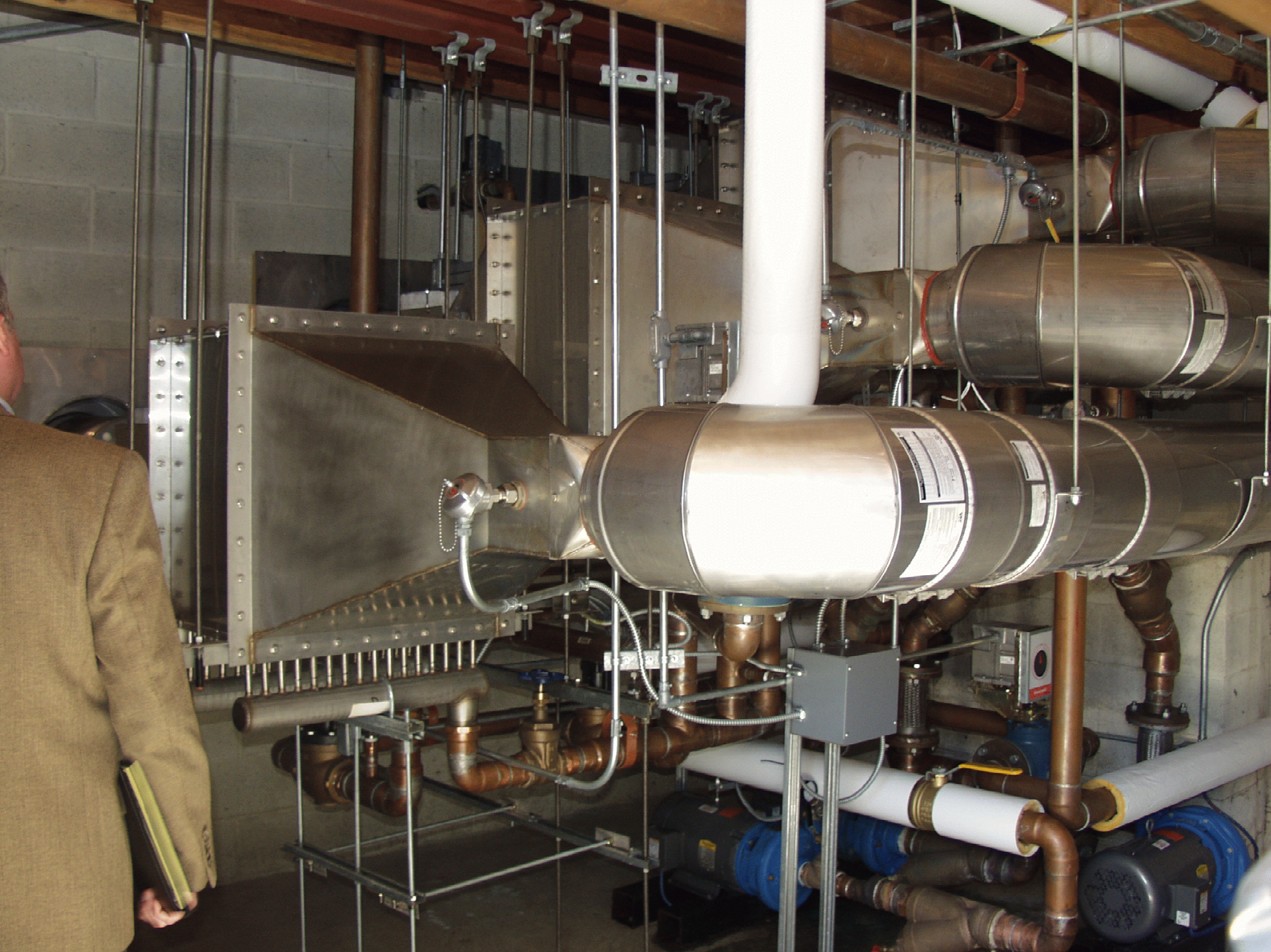
Buttons include: a numeric keypad, a set of four directional buttons (up, down, left, right), an "ACCEPT" button, a "STOP" button, and a "START" button.

Capstone MicroTurbine™ System



Power when and where you need it
Clean and quiet

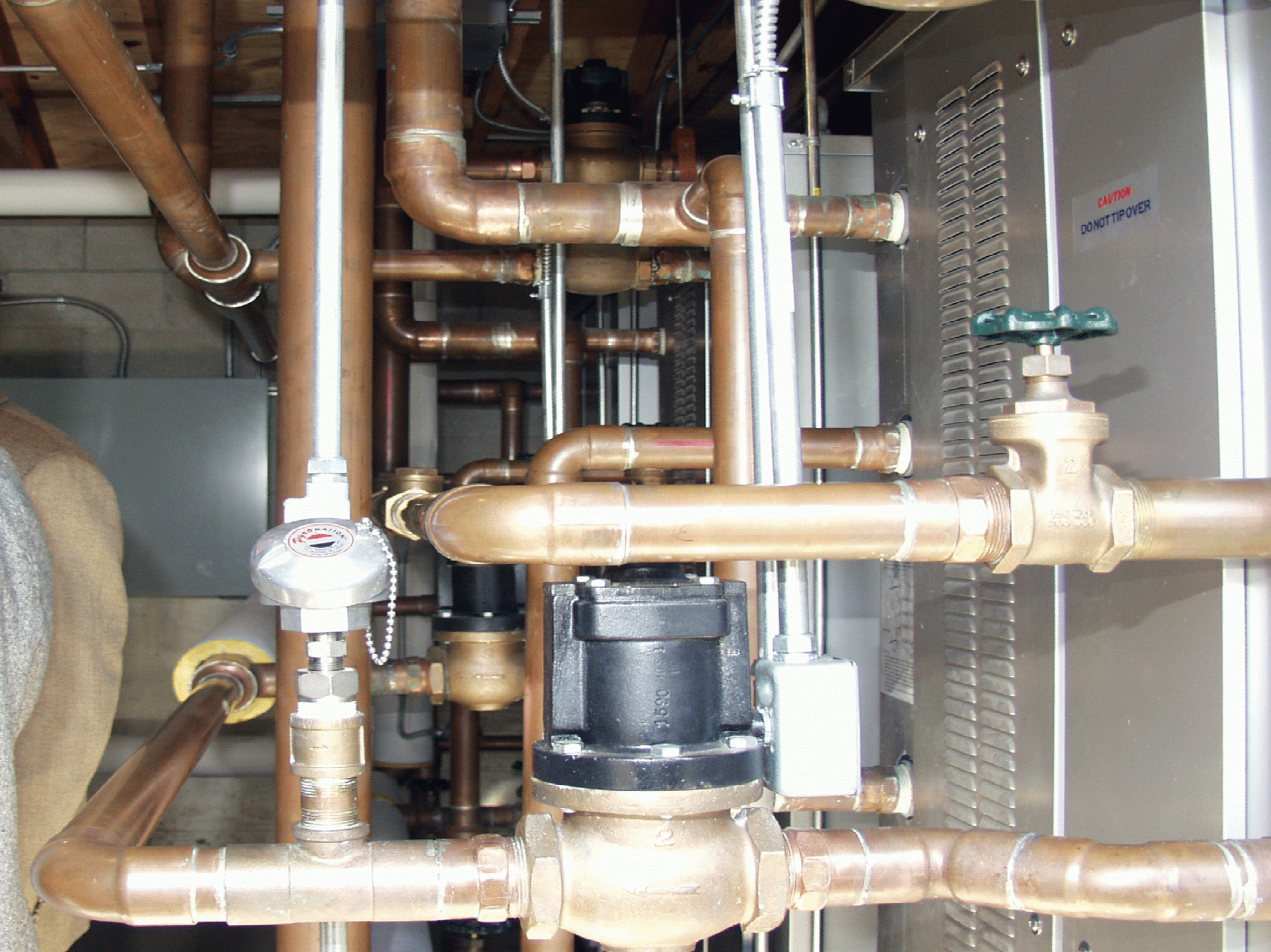






CAUTION
DO NOT TIP OVER

Diagram showing the connection of the gas valve to the burner assembly. The gas valve is connected to the burner assembly via a gas line. The burner assembly is connected to the burner tubes. The burner tubes are connected to the burner assembly via burner tubes. The burner assembly is connected to the burner tubes via burner tubes. The burner tubes are connected to the burner assembly via burner tubes.



CAUTION
DO NOT TIP OVER

1590

2

1590

2